



LITA



LED INSET APRON LIGHT

COMPLIANCES

ICAO: Annex 14 - Volume I par. 5.3.27 and Aerodrome Design Manual, Part 4, par. 12.2

IEC: TS 61827

FAA: EB No.67

APPLICATIONS

Aircraft stand manoeuvring guidance light for ICAO aircraft stands

BENEFITS

- 60000 hours LED rated life at full intensity, but over 100000 hours in field operating conditions
- In new installation, LED lights mean lower loads, lower size of CCRs and transformers, thus low life cycle costs
- The light output is variable like a traditional halogen lamp, as indicated by the FAA "Engineering Briefing No.67"
- Colour emitted directly by LEDs: absence of coloured filters ensures no energy losses and no colour shifts
- Fully compatible with existing AFL infrastructure
- Designed with simplicity allowing longer maintenance intervals and fewer spare parts
- No use of sealant to fix the lens in the dome thanks to customized gasket, making its replacement quick and easy
- No optical adjustment after LED module or lens replacement
- Valve for watertightness test after overhaul
- Available for parallel power supply 230/48 V or series power supply
- Operating with any typology of CCRs designed in compliance with IEC or FAA requirements

PERFORMANCES

- The electronic is strong-built and highly resistant to shock and vibration
- A surge protection device is provided in the electronics as required by the FAA "Engineering Briefing No.67" for series circuits
- The protection ring prevents damages caused by mechanical impacts in manoeuvring operations
- Automatic adaptation to the frequency of the supply current for series circuits
- Immediate detection of an internal fault for series circuits
- 11 mm protrusion
- Omnidirectional, 8" dia.
- Drop-forged dome and cast aluminium lower cover make the fitting sturdy, but lightweight too for ease handling in the field
- Light output not affected by heavy rainfall thanks to the flat surface of the dome
- O-Ring placed outside the dome to avoid dirt deposits between light and base
- Protection degree: IP67
- Temperature range: -55°C to +55°C

INSTALLATION

- Suitable for 8" or 12" dia. bases
- Adaptor ring for 8" light installation on 12" dia. bases
- Specific tools available for easy and precise installation

PHOTOMETRIC PERFORMANCES

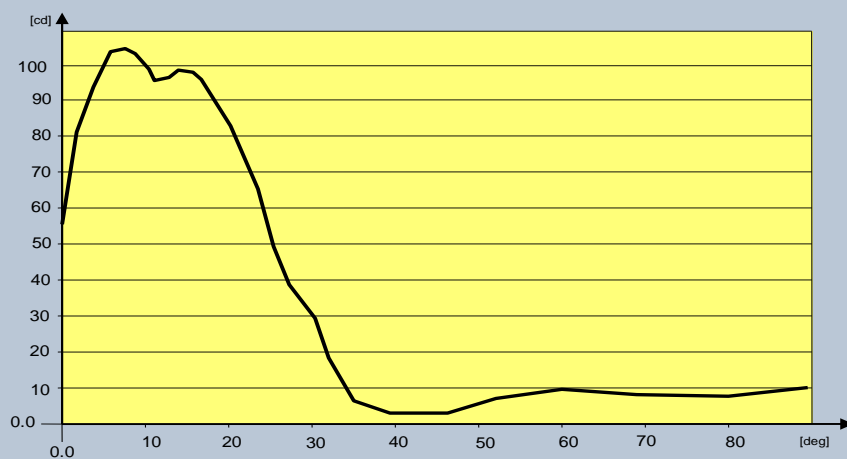
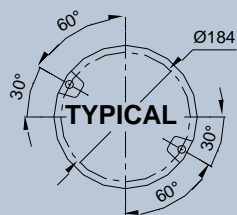


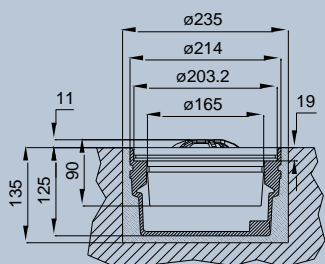
Fig. 1 ICAO Aerodrome Design Manual, Part 4

TABLE

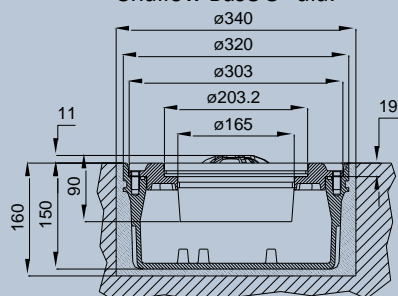
POWER CONSUMPTION	
Electrical System	1 Plug
Omnidirectional, Series Circuit	20 VA
Omnidirectional, Parallel Circuit	21 VA



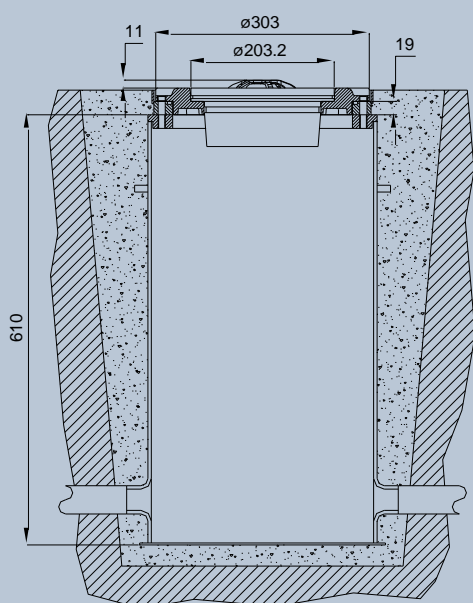
Light Fixture 8" dia.



Shallow Base 8" dia.



Shallow Base 12" dia.



L-868 Deep Base 12" dia.

LITA - I - Y - D - O - R

Basic P/N: _____

Compliance: _____

I = ICAO - IEC

Colour: _____

Y = Yellow

Mode: _____

S = Series Circuit

D = Parallel Circuit 48 V

Monitoring (only for series circuits): _____

O = Without Monitoring

M = With Monitoring

Mounting Assembly: _____

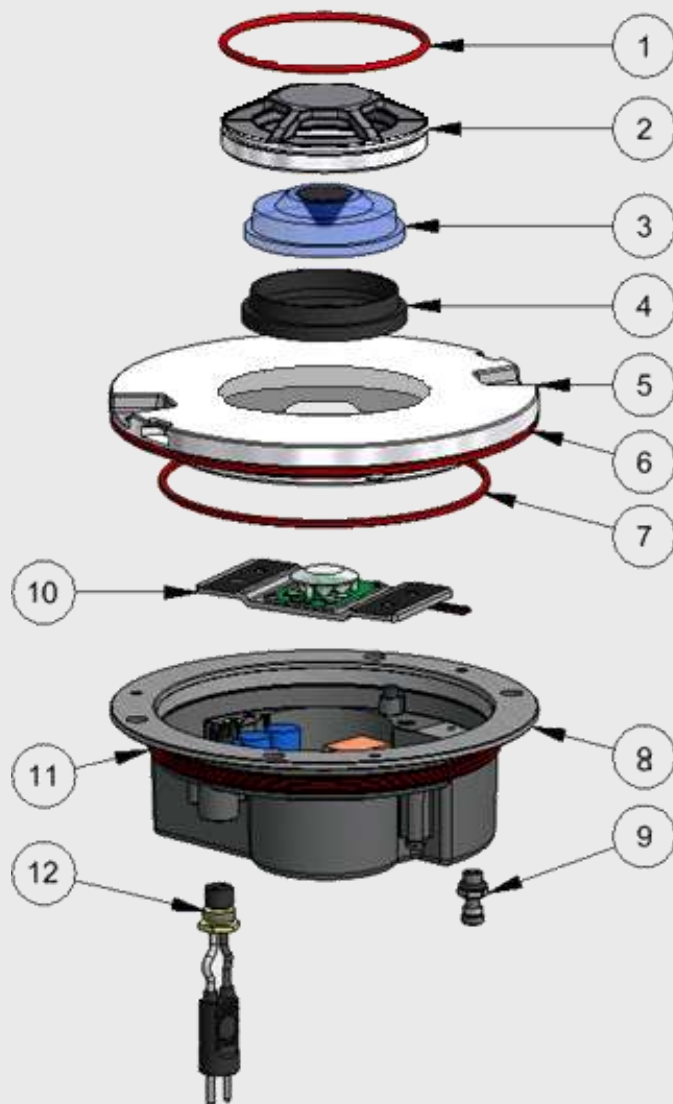
O = No Mounting Assembly

R = Adaptor Ring 8"-12" dia.

RENEWAL PARTS FOR LIGHT UNIT

- 1 O-Ring for aluminum lens holder
- 2 Stainless steel lens protection ring
- 3 Lens
- 4 Lens gasket
- 5 Dome with lens and gaskets
- 6 O-Ring for dome
- 7 O-Ring for lower cover
- 8 Lower cover with electronic, plug and valve
- 9 Valve for watertightness test
- 10 LED module with support and accessories
- 11 Lower cover gasket
- 12 FAA L-823 plug

Refer to the relevant technical manual for the complete list of the available spare parts

**ACCESSORIES**

- | | |
|----------|---|
| 011.1523 | Transformer for parallel circuits 50W 230/48V |
| 315.1230 | Base L-868 type, class IA, size B, 24" deep * |
| 315.1420 | Flange ring with pavement dam for L-868 base, size B, with O-Ring and bolts |
| 152.5251 | Shallow base, 8" dia., one cable lead, with hardware |
| 152.8110 | Shallow base, 12" dia., one cable lead, with gasket and hardware |
| 152.6116 | Adaptor Ring 8"-12" dia. complete with hardware |
| 712.1034 | Setting material for shallow base, 10 lt |
| 712.1035 | Quartz for shallow base, 25 kg |
| 332.4301 | Positioning jig for 8"-12" dia. shallow base, without optical device |
| 332.4140 | Lifting tool (2 pieces to work properly) |

* Sectional bases may be required depending upon the paving technique

For any information about isolating transformers and connectors, please see the specific catalogue pages

Shipping Weights and Volumes

	Light Unit	Shallow Base
Weight (kg)	3.35	3.2
Volume (m ³)	0.007	0.007

We reserve the right to change the design or specification data without notice

UC-PU-0331_EN