



## **INSET RUNWAY EDGE LIGHT**

### **SLRE**

# **INSTRUCTION MANUAL FOR USE, INSTALLATION AND MAINTENANCE**

Compiled by: Nicola Marabini

Approved by: Emidio Rauli

N° Attachments:

Copy n°:

Edition 11/03/2014

Supersedes edition 04/30/2012

INSET RUNWAY EDGE LIGHT SLRE  
INSTRUCTION MANUAL FOR USE, INSTALLATION AND MAINTENANCE

### **LIMITED PRODUCT WARRANTY**

THE FOLLOWING WARRANTY IS EXCLUSIVE AND IN LIEU OF ALL OTHER WARRANTIES, WHETHER EXPRESS, IMPLIED OR STATUTORY, INCLUDING, BUT NOT BY WAY OF LIMITATION, ANY WARRANTY OF MERCHANTABILITY OR FITNESS FOR ANY PARTICULAR PURPOSE.

OCEM - ENERGY TECHNOLOGY warrants to each original Buyer of Products manufactured by the Company that such Products are at the time of delivery to the Buyer, free of material and workmanship defects, provided that no warranty is made with respect to:

- (a) any Product, which has been repaired or altered in such a way, in Company's judgement, as to affect the Product adversely;
  - (b) any Product which has, in Company's judgement, been subject to negligence, accident or improper storage;
  - (c) any Product which has not been operated and maintained in accordance with normal practice and in conformity with recommendations and published specification of Company;
  - (d) the breaking of the warranty seals, if present, determines the immediate termination of the warranty;
- and,

OCEM - ENERGY TECHNOLOGY's obligation under this warranty is limited to use reasonable efforts to repair or, at its option, replace, during normal working hours at the facility of the Company, any Product which in its judgement proved not to be as warranted within the applicable warranty period. All costs of transportation of Products claimed not to be warranted and of those repaired or replaced, to or from the facility of the Company shall be borne by Purchaser. Company may require the return of any Product claimed not to be as warranted to its facility, transportation prepaid by Purchaser, to establish a claim under this warranty. The cost of labour for the installation of a repaired or replaced Product shall be borne by Purchaser. Replacement parts provided under the terms of this warranty are warranted for the remainder of the warranty period of the Products upon which they are installed to the same extent as if such parts were original components thereof. Warranty services provided under the Agreement do not assure uninterrupted operations of Products; Company does not assume any liability for damages caused by any delays involving warranty service.

### **IMPORTANT: READ THIS DOCUMENT**

Before proceeding to the operations of installation, commissioning, operation, maintenance or disposal, carefully read the entire document.

### **SAFETY INFORMATION**

Extreme caution should be exercised when working with this equipment; it is normally used or connected to circuits that operate at dangerous voltages and can be fatal.

The following section contains important safety information that you must follow when installing and using the apparatus.

Misuse of the equipment or lack of care in applying safety procedures and prescriptions specified in this document, may result in a hazard.

Avoid contact with voltage or current sources.

For no reason the protections and the safety devices must be removed.

Edition 11/03/2014

Supersedes edition 04/30/2012

INSET RUNWAY EDGE LIGHT SLRE  
INSTRUCTION MANUAL FOR USE, INSTALLATION AND MAINTENANCE

### OPERATION ON THE EQUIPMENT - SKILLS

Operation on the equipment and access to its internal parts shall be done by experienced personnel, adequately trained and aware of the risks related to electricity and high voltages. Safety rules shall be adopted when operating on the equipment, or on cables and other apparatus connected to the it

### DO NOT OPERATE ON ENERGIZED CIRCUITS

Do not carry out any operation on the converter or on apparatus connected to it when the circuits are energized.

### WHEN HANDLING AND SERVICING THIS EQUIPMENT, OBSERVE PRECAUTIONS FOR HIGH VOLTAGE EQUIPMENT.

Before any access, inspection or intervention, be sure to have switched-off the unit, opened the main circuit breaker and removed the supply to the unit (by opening the circuit breaker/switch on the distribution board at the beginning of the supply line).

Then wait discharge time (at least 5 minutes), ground carefully the system, and check for voltage presence before accessing..

### REANIMATION

The maintenance staff must be aware of the risks related to electricity, criteria to prevent the risk of electric shock and resuscitation techniques

### CE MARK



This equipment complies with the requirements of European regulations for the CE mark. The user has to respect all prescriptions reported in this document.

This equipment complies with the requirements of the EEC directives 2004/108/EEC and 2006/95/EEC with regard to "Electromagnetic Compatibility" and "Low Voltage Electrical Apparatus" respectively.

### OUT OF SERVICE

In case of dismantling, decommissioning, destruction, disposal, the user shall follow all the required precautions for component and material elimination, according to local rules and applicable law.

Edition 11/03/2014

Supersedes edition 04/30/2012

INSET RUNWAY EDGE LIGHT SLRE  
INSTRUCTION MANUAL FOR USE, INSTALLATION AND MAINTENANCE

**EDITIONS****Date**

13/10/2008	First issue
02/09/2010	New edition
04/30/2012	General revision
11/03/2014	New address of the Company
	General revision

**REVISIONS**

<b>Index</b>	<b>Date</b>	<b>Description</b>	<b>Edited by</b>	<b>Approved by</b>
--------------	-------------	--------------------	------------------	--------------------

**LIST OF EFFECTIVE PAGES**

From page 1 to page 35

Edition 11/03/2014

Supersedes edition 04/30/2012

INSET RUNWAY EDGE LIGHT SLRE  
INSTRUCTION MANUAL FOR USE, INSTALLATION AND MAINTENANCE

## INDEX

LIMITED PRODUCT WARRANTY.....	2
SAFETY INFORMATION .....	2
EDITIONS .....	4
REVISIONS.....	4
LIST OF EFFECTIVE PAGES.....	4
INDEX.....	5
INDEX OF FIGURES.....	6
LIST OF ATTACHMENTS .....	7
<b>1 GENERAL.....</b>	<b>8</b>
<b>2 MAIN FEATURES .....</b>	<b>8</b>
2.1 REMOVABLE LIGHT UNIT .....	8
2.1.1 Dome.....	8
2.1.2 Optical Assembly.....	9
2.1.3 Lower Cover .....	9
2.2 SHALLOW BASE .....	16
<b>3 INSTALLATION .....</b>	<b>17</b>
3.1 Pavement Boring and Sawcutting .....	17
3.1.1 Scheme of Light Configuration .....	18
3.2 INSTALLING THE SHALLOW BASE .....	19
3.3 INSTALLING THE LIGHT UNIT ON L-868 BASE, SIZE B .....	23
3.4 SECONDARY WIRING .....	24
<b>4 MAINTENANCE .....</b>	<b>25</b>
4.1 MAINTENANCE PROGRAM .....	25
4.1.1 Periodical Checks .....	25
4.1.2 Snowplow Operations.....	26
4.2 REMOVING AND OPENING THE LIGHT UNIT FROM THE BASE .....	26
4.2.1 Removing the fixture .....	26
4.2.2 Opening the fixture .....	26
4.2.3 Closing the fixture .....	26
4.2.4 Leakage test .....	27
4.2.5 Reinstalling the fixture .....	27
4.3 PRIMS CLEANING.....	28
4.3.1 Prism outside cleaning .....	28
4.3.2 Prism inside cleaning .....	28
4.4 PRISM REPLACEMENT .....	28
4.4.1 Removing the Prism .....	29
4.4.2 Installing the New Prism .....	29
4.5 FILTER REPLACEMENT .....	29

Edition 11/03/2014

Supersedes edition 04/30/2012

# INSET RUNWAY EDGE LIGHT SLRE INSTRUCTION MANUAL FOR USE, INSTALLATION AND MAINTENANCE

4.5.1 Removing the filter .....	30
4.5.2 Istalling the new filter .....	30
4.6 RELAMPING .....	30
4.7 GASKETS.....	31
4.7.1 Gasket examination .....	31
4.7.2 O-Ring replacement .....	32
4.8 CABLE LEAD WITH PLUG.....	32
4.8.1 Removing the cable lead with plug.....	32
4.8.2 Installing the new cable lead with plug .....	33
4.9 VIBRATION-DAMPING BLOCK.....	33
4.10 PRESSURE VALVE .....	34
4.11 CLEANING .....	35

## INDEX OF FIGURES

Figure 1 – Sectional View .....	10
Figure 2 – Part List.....	11
Figure 3 – Complete P/N identification.....	12
Figure 4 – Dome “C” + “A” – Outside view.....	13
Figure 5 – Dome “C” + “B” – Outside view.....	13
Figure 6 – Dome “C” + “A” – Inside view.....	<b>Errore. Il segnalibro non è definito.</b>
Figure 7 – Dome “C” + “B” – Inside view.....	<b>Errore. Il segnalibro non è definito.</b>
Figure 8 – Lower cover with two cable leads and optional fuse cutouts – Inside view	<b>Errore. Il segnalibro non è definito.</b>
Figure 9 – Lower cover with one cable lead and optional fuse cutout – Inside view	<b>Errore. Il segnalibro non è definito.</b>
Figure 10 – Standard 12” shallow base .....	<b>Errore. Il segnalibro non è definito.</b>
Figure 11 – Pavement Boring, Sawcutting and Joint Intersection Details	<b>Errore. Il segnalibro non è definito.</b>
Figure 12 – Example of runway edge configuration (one transformer per each fixture).....	18
Figure 13 – Gaskets for 12” shallow base .....	21
Figure 14 – 12” shallow base for side or bottom ducts (method “B”).....	22
Figure 15 – Shallow base installation details .....	22
Figure 16 – Optical device (refer to the manual UT-MT-0485 for further information) .....	23
Figure 17 – Gaskets for L-868 base .....	24
Figure 18 – Lower Cover with Pressure Valve .....	27
Figure 19 – Prism Cleaning .....	28
Figure 20 – Prism Replacement.....	29
Figure 21 – Filter Replacement .....	30
Figure 22 – Relamping.....	31
Figure 23 – Prism Gasket .....	31
Figure 24 - Insulating Strip Female Faston .....	32

Edition 11/03/2014

Supersedes edition 04/30/2012

INSET RUNWAY EDGE LIGHT SLRE  
INSTRUCTION MANUAL FOR USE, INSTALLATION AND MAINTENANCE

Figure 25 – Cable Lead With Plug.....	32
Figure 26 - Vibration-Damping Block .....	32
Figure 27 - Lower Cover with Pressure Valve .....	32

#### **LIST OF ATTACHMENTS**

UC-PU-0320 - LIST OF THE RECOMMENDED SPARE PARTS

Edition 11/03/2014

Supersedes edition 04/30/2012

INSET RUNWAY EDGE LIGHT SLRE  
INSTRUCTION MANUAL FOR USE, INSTALLATION AND MAINTENANCE

## 1 GENERAL

---

**SLRE** Semi-flush runway edge light is high intensity, uni-bidirectional, inset, 12" steady-burning type.

These fixtures are intended for use as runway edge or threshold\end, in order to provide a visual aid to the moving aircraft.

SLRE lights are in compliance with ICAO Annex 14 Vol.1, FAA AC 150/5345-46 (Style 2), IEC TS 61827 (Style 3) and STANAG 3316.

The fixtures described in this manual are designed to be connected to series circuit, fed through standard isolation transformers connected to CCR with variable current from 2.8 A to 6.6 A.

Location of these fittings shall be in compliance with ICAO – Annex 14, STANAG 3316 and FAA.

## 2 MAIN FEATURES

---

Each light assembly consists of a removable fixture and a shallow base receptacle. The fixture is waterproof and designed to withstand aircraft impact and roll-over loads without damage.

The fixture can be bidirectional type (bidirectional dome provided with two optical windows and equipped with two lamps that can operate simultaneously or in independent way) or unidirectional type (unidirectional dome provided with one optical window and equipped with only one lamp); it is also possible to obtain an unidirectional light from a bidirectional dome choosing the 'X – Screened' option (see Figure 3); this configuration includes a bidirectional dome and a screen to blind the unused optical window.

### 2.1 REMOVABLE LIGHT UNIT

---

The removable fixture mainly consists of a dome, an optical assembly and a lower cover.

#### 2.1.1 Dome

The **dome** is made of treated aluminium casting and includes one or two windows to seat the prisms, complete with gaskets, kept in the proper position by means of a mounting plate fixed with three screws HSFH M5x12. In correspondence of the windows, the dome is outside provided with identification letters "A", "B" and "C". Opposite apertures are parallel to the centerline axis and the different toe-in of the lamps give the correct light beam depending on the kind of fixture: runway edge or threshold\end light.



Edition 11/03/2014

Supersedes edition 04/30/2012

INSET RUNWAY EDGE LIGHT SLRE  
INSTRUCTION MANUAL FOR USE, INSTALLATION AND MAINTENANCE

The shallow base installation becomes very easy because no precise toe-in is required during civil.

The dome is provided with six through holes for fastening the light unit to the base and two suitable slots, in opposite position, to make easy the fixture removal by using two suitable lifting tools (available on request, P/N 332.4140 or 332.4230). As alternative, two screwdrivers can be used.

A silicone O-Ring (separately supplied) has to be mounted outside around the dome, to avoid dirt deposits between dome and shallow base.

### 2.1.2 Optical Assembly

The **optical assembly** (bidirectional) consists of two prisms (Figure 1 - n°3) with relevant gaskets (Figure 1 - n°4), one or two filters with relevant holder, when required, (Figure 1 - n°8-9) and one or two lamps (Figure 1 - n°13). Unidirectional fixtures mount only one lamp, one prism and one filter, when required.

Fixtures can be provided with six kinds of lamp supporting plate in order to obtain the following configurations:

- ICAO 45 m and 60 m ("C"+"A") (P/N 152.9025)
- ICAO 45 m and 60 m ("C"+"B") (P/N 152.9085)
- FAA green-red ("C"+"A") (P/N 152.9141)
- FAA green-red ("C"+"B") (P/N 152.9151)
- FAA red-red ("C"+"A") (P/N 152.9161)
- FAA red-red ("C"+"B") (P/N 152.9171)

The lamp is of tungsten-halogen type, rated 105 W 6,6 A, 1500 hours average lamp life, with dichroic reflector and male faston plug wires. The lamp is locked into its seat by a single elastic holder (stainless steel) in order to realize an easy and quick lamp replacement.

All the optical assembly parts are factory assembled; they may be field-replaced if necessary.

### 2.1.3 Lower Cover

The **lower cover** consists of a treated aluminium casting; it is fastened to the dome by means of three screws HSCH M5x16. An O-Ring is provided between dome and lower cover.

The cover is provided with one or two threaded holes for cable entry and external grounding screw with yellow-green cable lead, size 2.5 mm<sup>2</sup>, 0.460 m long, with male faston terminal. A suitable valve is outside mounted for the leakage test.

Edition 11/03/2014

Supersedes edition 04/30/2012

INSET RUNWAY EDGE LIGHT SLRE  
INSTRUCTION MANUAL FOR USE, INSTALLATION AND MAINTENANCE

Watertightness between fixture and shallow base is ensured by means of an O-Ring (separately supplied) to be placed on the relevant groove around the lower cover.

The fixture is supplied with one or two **cable leads with L-823 plug**; each of them consists of two single-pole teflon leads, size 2.1 mm<sup>2</sup> (#14 AWG), 0.700 m long. The plug is in compliance with FAA AC 150/5345-26 for very quick coupling with the receptacle mounted on the shallow base.

The fixture is 304 mm in diameter and 123 mm (+ 18,5 mm for plugs) high; the protrusion above the ground is less than 12.7 mm.

An identification data label is externally applied over the lower cover (Figure 1 - n°30). Moreover, to identify quickly the beam colour, the letters "A", "B" and "C" of the dome in front of the windows are painted in the same colour of the light beam.

The same colour painting is provided outside on the lower cover.

See "Complete P/N identification" figure for P/N information.

All hardware is made of stainless steel.

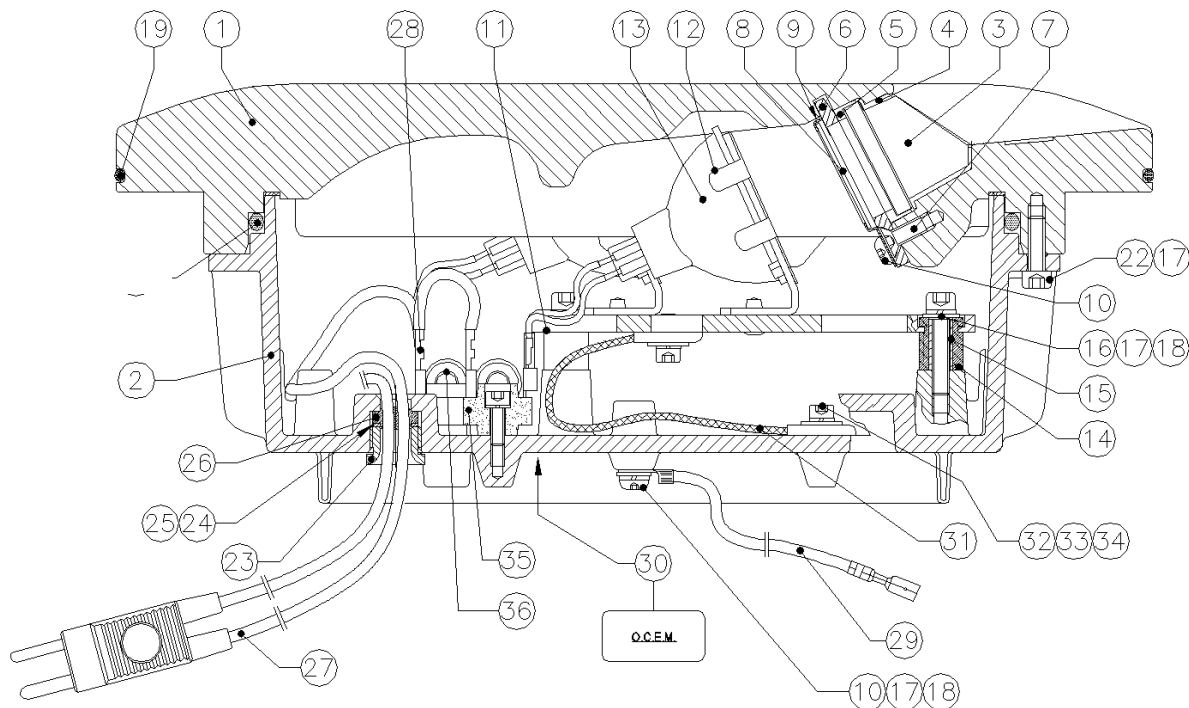


Figure 1 – Sectional View

Edition 11/03/2014

Supersedes edition 04/30/2012

INSET RUNWAY EDGE LIGHT SLRE

INSTRUCTION MANUAL FOR USE, INSTALLATION AND MAINTENANCE

No.	Description	Qty
1	Dome.....	1
2	Lower cover.....	1
3	Prism .....	2
4	Prism gasket.....	2
5	Teflon prism gasket.....	2
6	Mounting plate .....	2
7	HSFH M5x12 inox screw .....	6
8	Filter .....	2
9	Filter holder.....	2
10	HSCH M5x10 inox screw .....	4
11	Lampholder .....	1
12	Lamp elastic spring .....	2
13	Lamp.....	2
14	Vibration-damping block .....	4
15	Spacer.....	4
16	HSCH M5x16 inox screw .....	4
17	Ø5 inox grower washer.....	8
18	Ø5 inox grower washer.....	5
19	O-Ring 41150 silicone .....	1
20	O-Ring 6850 silicone .....	1
22	HSCH M5x16 inox screw .....	3
23	Cable gland - Nut .....	2
24	Cable gland - Washer .....	2
25	Cable gland – Washer (PTFE) .....	2
26	Cable gland - Gasket .....	2
27	Cable lead with plug.....	2
28	Cable lead with plug . Female faston terminal .....	4
29	Grounding cable lead with male faston terminal .....	1
30	Identification label .....	1
31	Bare copper plate .....	2
32	HSCH M4x10 inox screw .....	2
33	Ø4 inox grower washer.....	2
34	Ø4x12x1 inox washer.....	2
35	Insulating strip .....	2
36	Fuse cutout .....	2

Figure 2 – Part List

Edition 11/03/2014

Supersedes edition 04/30/2012

INSET RUNWAY EDGE LIGHT SLRE

INSTRUCTION MANUAL FOR USE, INSTALLATION AND MAINTENANCE

**SLRE – S – CPY – 1P – 200 – O – F**

**Basic P/N:** \_\_\_\_\_

**Compliance:** \_\_\_\_\_

I = ICAO 60 m Runway Edge  
S = ICAO 45 m Runway Edge  
E = FAA L-850C Runway Edge  
A = FAA L-850D Threshold/End

**Colour (Left Side) / ( Right Side)\*:** \_\_\_\_\_

C = White  
R = Red  
Y = Yellow  
G = Green  
X = Screened

**Electrical System:** \_\_\_\_\_

1P = One Cable Lead  
2P = Two Cable Leads

**Lamps:** \_\_\_\_\_

100 = 1x 105 W 6.6A with reflector  
200 = 2x 105 W 6.6A with reflector

**Mounting Assembly:** \_\_\_\_\_

O = No Mounting Assembly

**Options:** \_\_\_\_\_

F = Fuse Cutout

\* The beams aiming is not field adjustable  
The colour of the central beam must be followed by a "P"

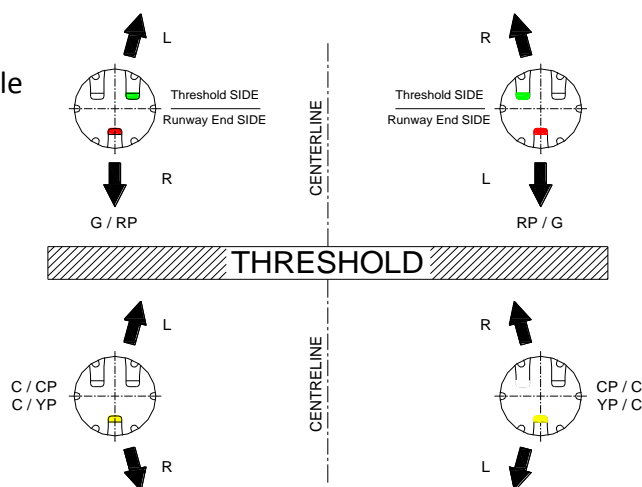
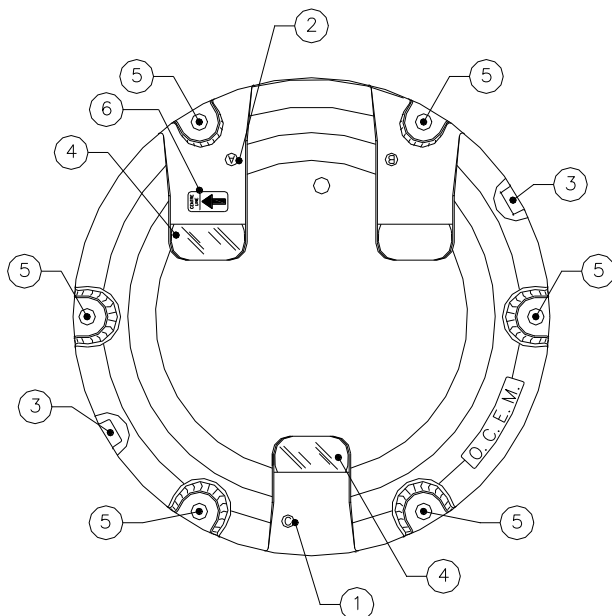


Figure 3 – Complete P/N identification

Edition 11/03/2014

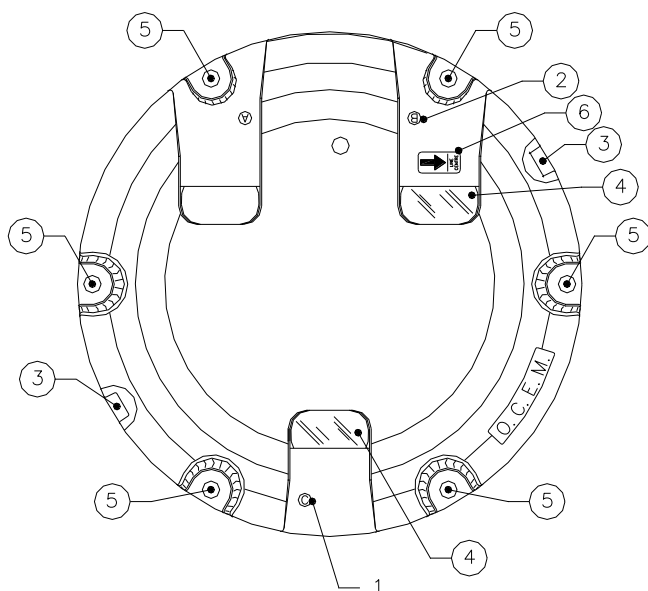
Supersedes edition 04/30/2012

INSET RUNWAY EDGE LIGHT SLRE  
INSTRUCTION MANUAL FOR USE, INSTALLATION AND MAINTENANCE



- 1 - Letter "C" – central beam side
- 2 - Letter "A" – not centered beam side
- 3 - Slot for dome removal
- 4 - Prisms
- 5 - Through holes for light unit fastening
- 6 - Label with arrow for toe-in identification

*Figure 4 – Dome "C" + "A" – Outside view*



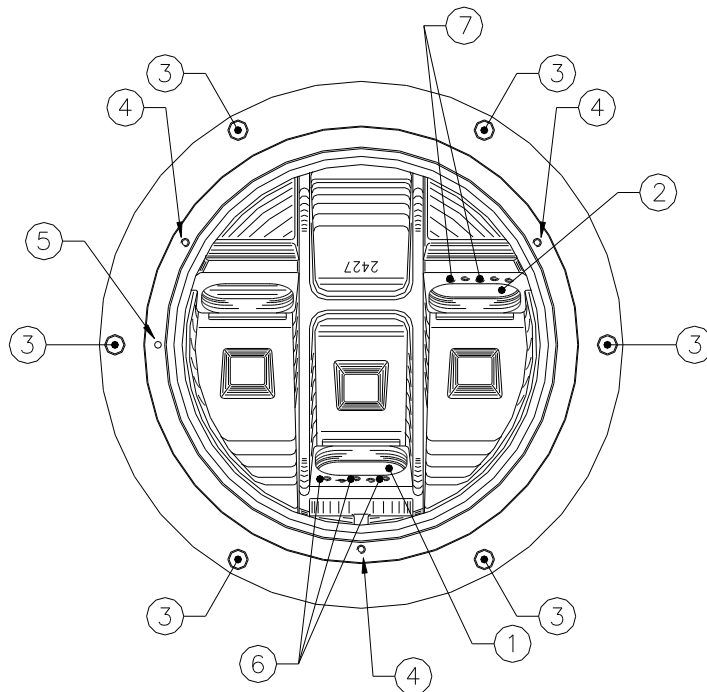
- 1 - Letter "C" – central beam side
- 2 - Letter "B" – not centered beam side
- 3 - Slot for dome removal
- 4 - Prisms
- 5 - Through holes for light unit fastening
- 6 - Label with arrow for toe-in identification

*Figure 5 – Dome "C" + "B" – Outside view*

Edition 11/03/2014

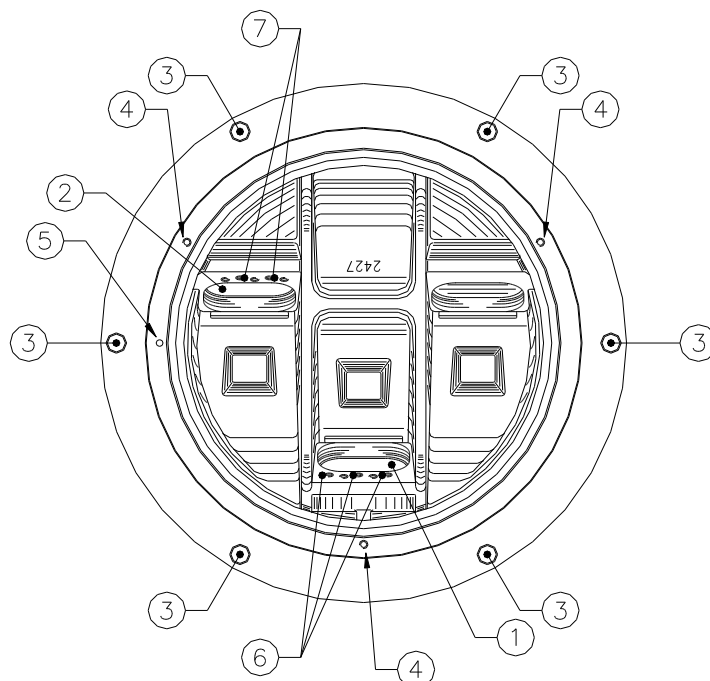
Supersedes edition 04/30/2012

INSET RUNWAY EDGE LIGHT SLRE  
INSTRUCTION MANUAL FOR USE, INSTALLATION AND MAINTENANCE



- 1 - Window "C" to seat the prism – central beam side
- 2 - Window "A" to seat the prism – not-centered beam side
- 3 - Through holes for light unit fastening
- 4 - Holes for lower cover fastening
- 5 - Lower cover reference pin
- 6 - Holes for mounting plate fastening
- 7 - Holes for filter support fastening

Figure 6 – Dome "C" + "A" – Inside view



- 1 - Window "C" to seat the prism – central beam side
- 2 - Window "B" to seat the prism – not-centered beam side
- 3 - Through holes for light unit fastening
- 4 - Holes for lower cover fastening
- 5 - Lower cover reference pin
- 6 - Holes for mounting plate fastening
- 7 - Holes for filter support fastening

Figure 7 – Dome "C" + "B" – Inside view

Edition 11/03/2014

Supersedes edition 04/30/2012

INSET RUNWAY EDGE LIGHT SLRE  
INSTRUCTION MANUAL FOR USE, INSTALLATION AND MAINTENANCE

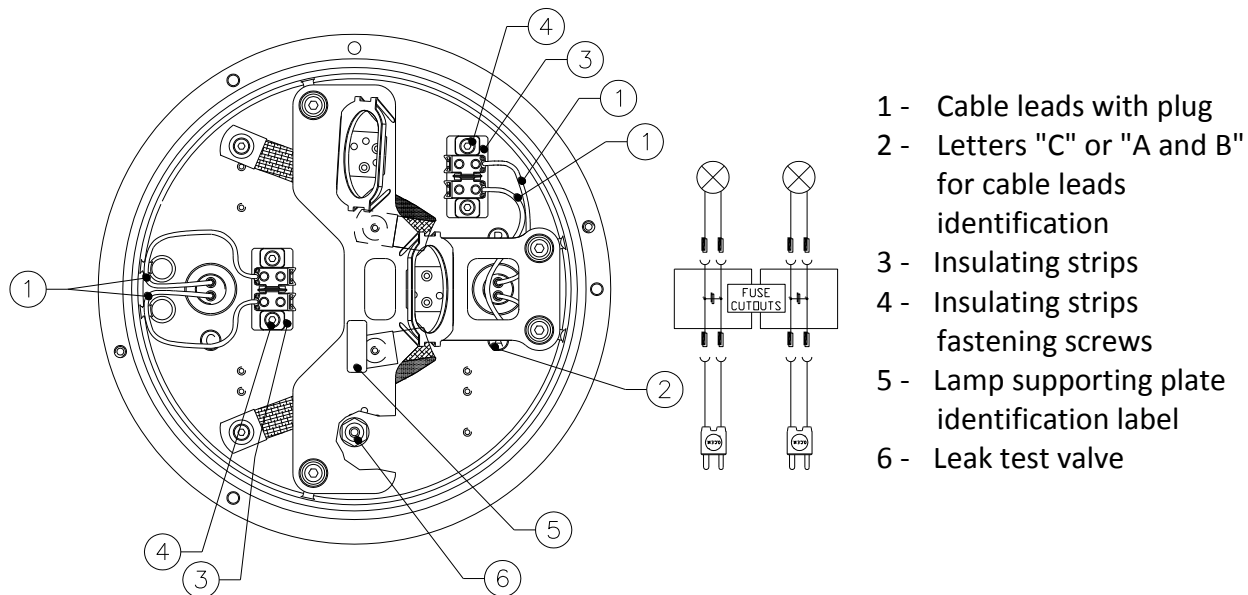


Figure 8 – Lower cover with two cable leads and optional fuse cutouts – Inside view

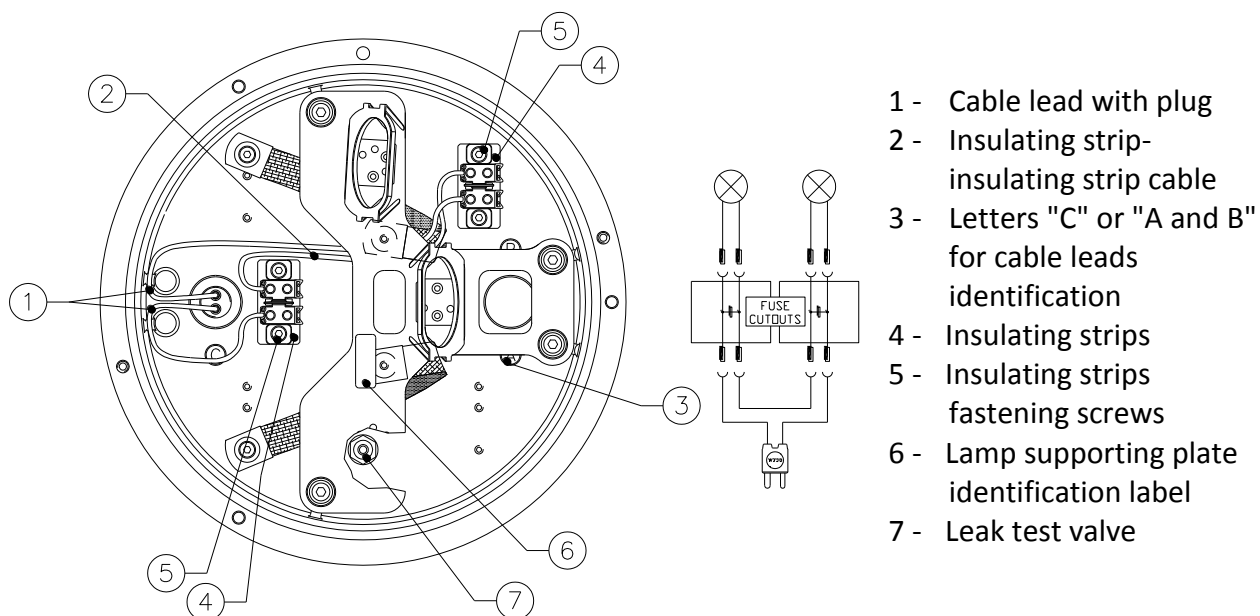


Figure 9 – Lower cover with one cable lead and optional fuse cutout – Inside view

Edition 11/03/2014

Supersedes edition 04/30/2012

INSET RUNWAY EDGE LIGHT SLRE  
INSTRUCTION MANUAL FOR USE, INSTALLATION AND MAINTENANCE

## 2.2 SHALLOW BASE

The **shallow base** (fig. 11) consists of a treated aluminium casting containing an electrical feed-thru system to connect the power cables, consisting of one or two cable leads with receptacle incoming inside the base through one or two cable glands. Each cable lead with receptacle consists of two single-pole leads, size 2.5 mm<sup>2</sup>, 1.00 m long, with FAA L-823 receptacle.

The letters "A" and "B" are printed inside the base for cable leads identification.

The base is equipped with an internal grounding screw with yellow-green cable lead, size 2.5 mm<sup>2</sup>, 0.250 m long, with female faston terminal for quick connection to the corresponding of the fixture. An additional external grounding screw is provided close to the cable entry.

The shallow base is designed for cementing in place by means of epoxy-resin in a hole drilled in the pavement.

The fixture has to be fastened to the base by means of six M10x30 stainless steel hex cap screws. If the base has American threaded holes, UNC 3/8-16 screws can be used. Each locking screw is complete with special sealed external silicon-coated lock-washer.

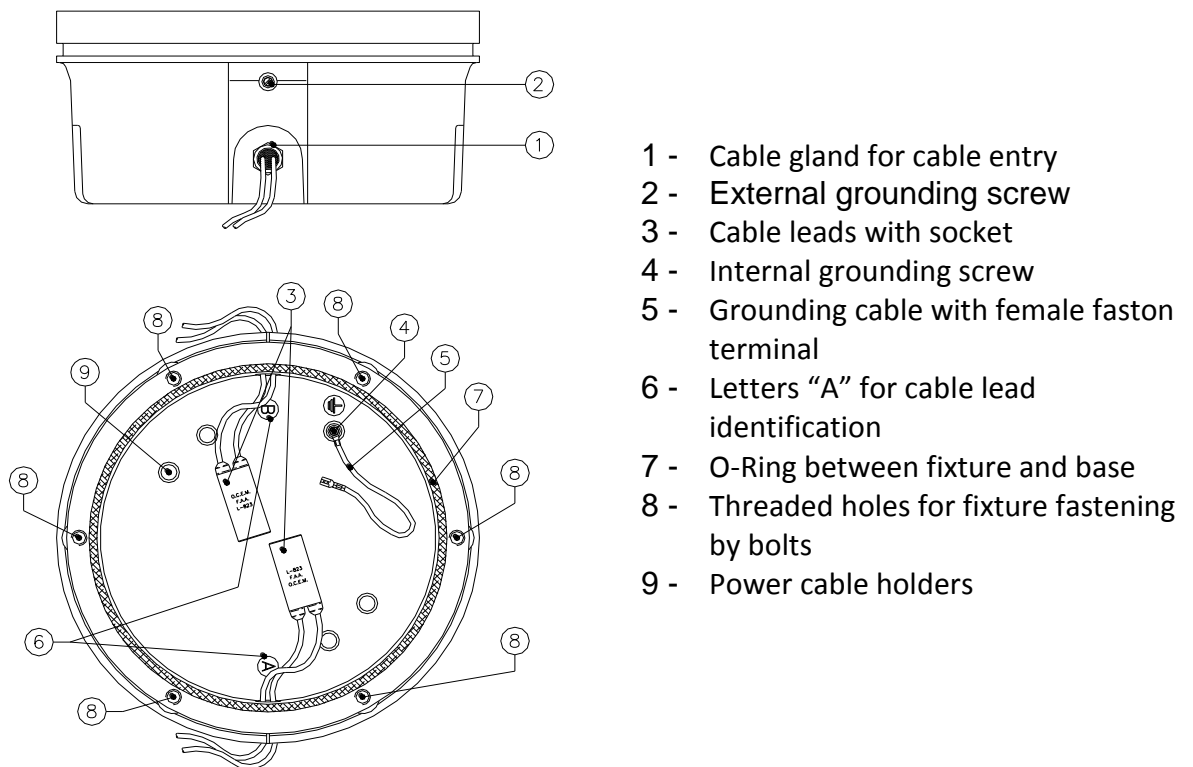


Figure 10 – Standard 12" shallow base



Edition 11/03/2014

Supersedes edition 04/30/2012

INSET RUNWAY EDGE LIGHT SLRE

INSTRUCTION MANUAL FOR USE, INSTALLATION AND MAINTENANCE

A gasket (separately supplied) must be placed between base and fixture for watertightness: for 12" fixtures (Figure 10 - n°7) placed in the relevant shallow base groove.

The 12" shallow base is 320 mm in diameter and 150 mm high.

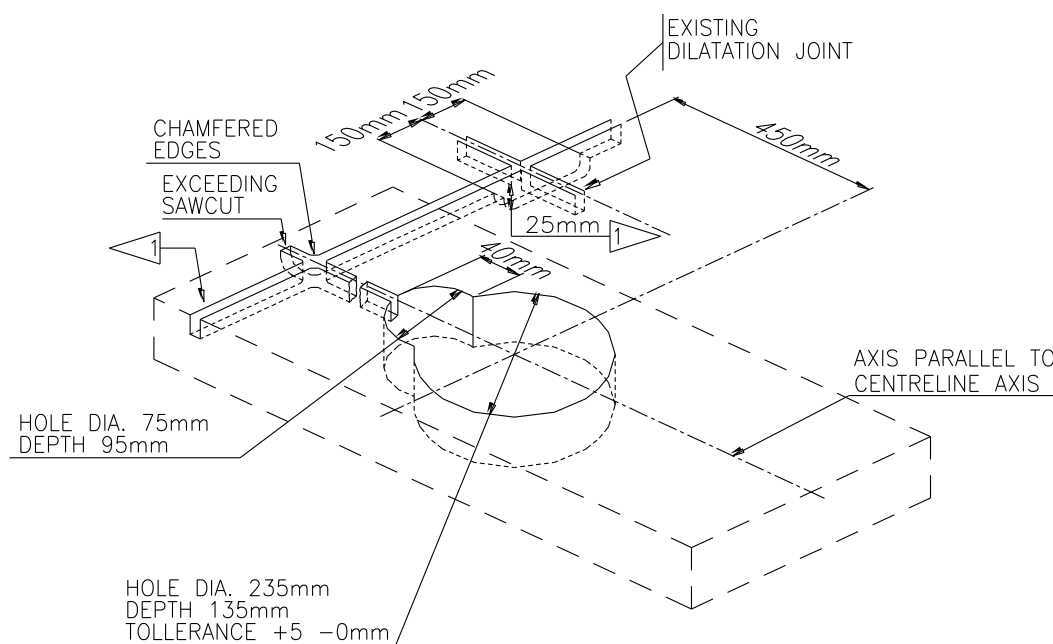
On request, special bases without cable leads can be supplied, provided with holes suitable for conduit connections.

Inside the base two suitable holders (Figure 10 - n°9) are provided to properly sustain the secondary power cable, in case of this cable is inside incoming through a conduit.

### 3 INSTALLATION

#### 3.1 Pavement Boring and Sawcutting

Drill each recess in pavement following the instruction in Figure .



NOTE:

- 1 12" SHALLOW BASE :
- BASE HOLE : DIA: 340mm - 160 mm DEEP ( +5 ; -0 )
- CABLE GLAND HOLE : DIA: 75mm - 120 mm DEEP

*Figure 11 – Pavement Boring, Sawcutting and Joint Intersection Details*

Make sure the recess size and depth are maintained within the specified limits. All surfaces of the recess must be clean and dry. If any of these surfaces is damp, it is desirable that it be dried and blown clean with a compressed air blast. The recess side walls must be perpendicular to the pavement surface. The bottom surface must

Edition 11/03/2014

Supersedes edition 04/30/2012

INSET RUNWAY EDGE LIGHT SLRE  
INSTRUCTION MANUAL FOR USE, INSTALLATION AND MAINTENANCE

be flat or slightly concave to assure that the shallow base rest securely and in true position. The recess can best be drilled using a diamond-faced core drill in a sturdy, stable drill rig.

Mark on the pavement surface the aiming direction of the light by chalk, nails or other devices.

### 3.1.1 Scheme of Light Configuration

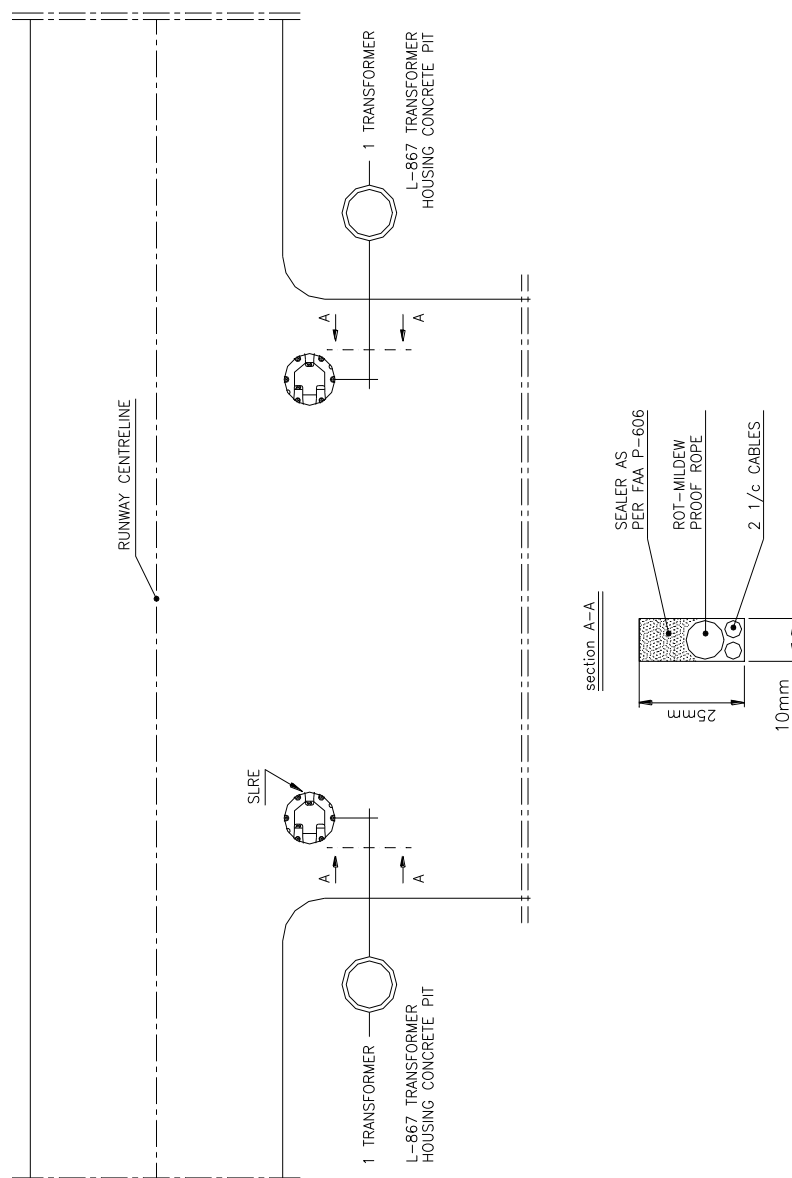


Figure 12 – Example of runway edge configuration (one transformer per each fixture)

Edition 11/03/2014

Supersedes edition 04/30/2012

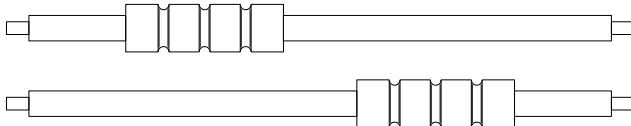
# INSET RUNWAY EDGE LIGHT SLRE INSTRUCTION MANUAL FOR USE, INSTALLATION AND MAINTENANCE

## 3.2 INSTALLING THE SHALLOW BASE

Two different installations are possible:

- Method “A” – cable leads to be laid in wireways
- ▣ Method “B” – cable leads to be laid in cable ducts (Figure 14)

Proceed as follow to realize a proper installation.

STEP	A	B	ACTIVITY DESCRIPTION
1	•	▣	Take the base from the shipping box.
2	•	▣	To assure an adequate bond between base and hole all external surfaces of the base should be sandblasted and must be cleaned with solvent. <b>TAKE CARE NOT TO DAMAGE THE ELECTRICAL SYSTEM.</b>
3	•	/	Connect an insulated G/Y grounding wire of suitable length to the grounding screw externally provided on the wall of the base.
4	•	/	<p>Splice the light base leads to the power cables using solderless squeeze connectors, as shown in the figure, crimped with the proper tool. Connect also the grounding wire to the main grounding network by using a suitable clamping lug.</p>  <p><b>ATTENTION: Insulate each splice carefully using either heat shrinkable insulating tubing properly applied or at least three layers of plastic electrical insulating tape applied with half overlap.</b></p>
5	•	▣	Mount the positioning jig (P/N 332.4301) on the base as shown in Figure . <u>An optical device for proper fixture orientation is available (P/N 332.4351 Figure 16).</u>
6	•	/	Properly arrange the leads in the wireways using small pieces of insulating tape if necessary.

Edition 11/03/2014

Supersedes edition 04/30/2012

INSET RUNWAY EDGE LIGHT SLRE  
INSTRUCTION MANUAL FOR USE, INSTALLATION AND MAINTENANCE

STEP	A	B	ACTIVITY DESCRIPTION
7	•	▣	<p>Completely cover the bottom of the base with sealer material, apply a thin coat of sealer to the bottom of the drilled hole to assure a bond between the bottom of the light base and the drilled hole. It may be necessary to place temporary plugs so as to block the wireways entrances into the drilled hole (METHOD "A") or the cable ducts entrance (METHOD "B"). The plugs will retain the sealer while it begins to dry up.</p> <p><b>ATTENTION: avoid starting the installation when the ambient temperature is below 10°C (86°F), unless the sealer used is designed to dry up at a lower temperature.</b></p>
8	•	▣	<p>Push the base into the recess until its upper side is at the level of the pavement surface; take care no sealer flowing inside the base. Align the notch of the base with the markings on the pavement surface.</p>
9	•	/	<p>Observing the circular level fixed on the jig, level the jig by operating the three leveling lobe knobs (Figure 15). If necessary, a weight may be placed on the jig to hold the light base in position.</p> <p>The remainder of the space between the sides of the shallow base and the drilled hole should be filled with sealer up to approx 25 mm from the pavement, according to the local needs.</p> <p>Fill the remaining 25 mm with a suitable joint sealing filler.</p>
10	/	▣	<p>Observing the circular level fixed on the jig, level the jig by operating the three leveling lobe knobs (Figure ). If necessary, a weight may be placed on the jig to hold the light base in position.</p> <p>When the shallow base is in its final position, the conduit(s) must be properly jointed to the hole(s) provided on the shallow base. This(these) hole(s) can be provided either on the wall either on the bottom, the number and the dimensions according to customer requirements (Figure 14).</p> <p>The remainder of the space between the sides of the shallow base and the drilled hole should be filled with sealer up to approx 25 mm from the pavement, according to the local needs.</p> <p>Fill the remaining 25 mm with a suitable joint sealing filler.</p>
11	/	▣	<p>Lay the secondary power cable, equipped with a suitable two-pole receptacle kit, and the grounding wire inside the cable duct.</p>

Edition 11/03/2014

Supersedes edition 04/30/2012

INSET RUNWAY EDGE LIGHT SLRE

INSTRUCTION MANUAL FOR USE, INSTALLATION AND MAINTENANCE

STEP	A	B	ACTIVITY DESCRIPTION
12	●	■	<p>To install a 12" fixture place the O-Ring around the dome ( Figure 13 - n°1) and between fixture and base (Figure 13 - n°3).</p> <p>Connect the plug and the grounding wire of the fixture with the receptacle and the grounding wire of the base; press the fixture by hand onto the base and secure it using the six locking screws complete with washer, one drop of screw paste (e.g. Dow Corning Molycote 1000) should be applied to the screws before installation. Tightening torque is 35 Nm.</p> <p><b>ATTENTION: The fixture is subject to mechanical damage and/or optical misalignment if not properly seated on the base flange.</b></p>

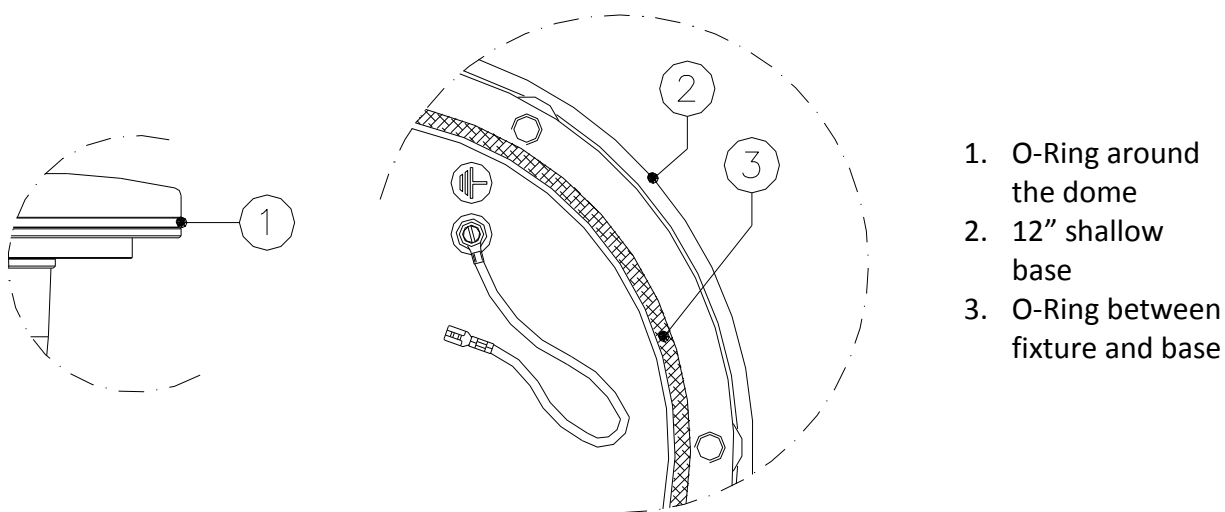


Figure 13 – Gaskets for 12" shallow base

Edition 11/03/2014

Supersedes edition 04/30/2012

INSET RUNWAY EDGE LIGHT SLRE  
INSTRUCTION MANUAL FOR USE, INSTALLATION AND MAINTENANCE

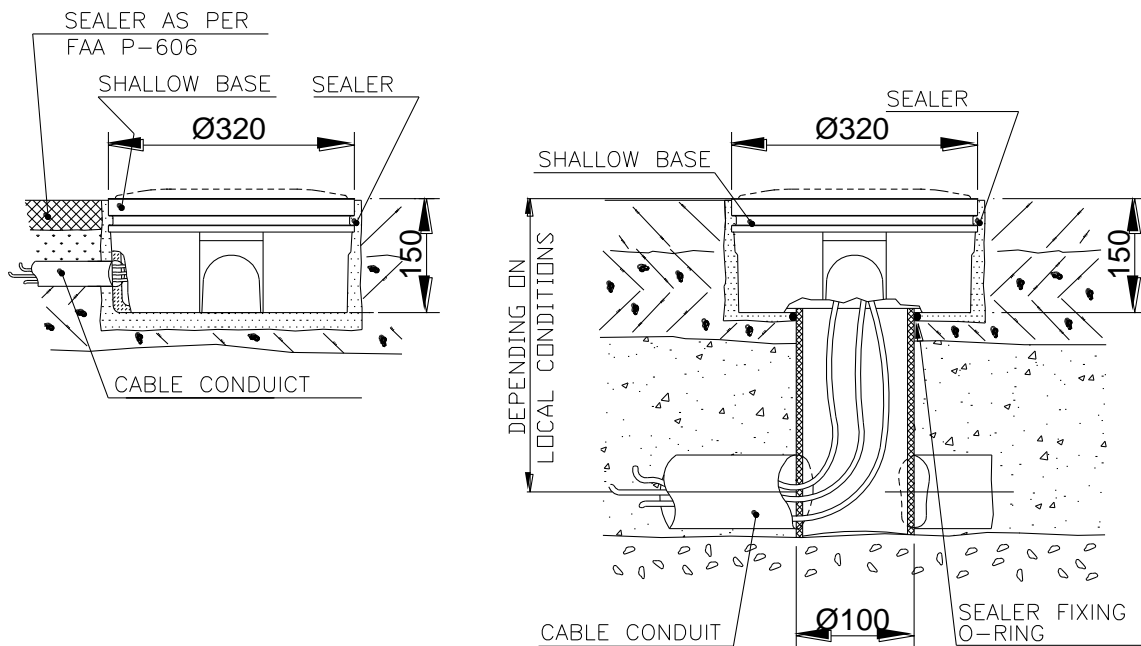
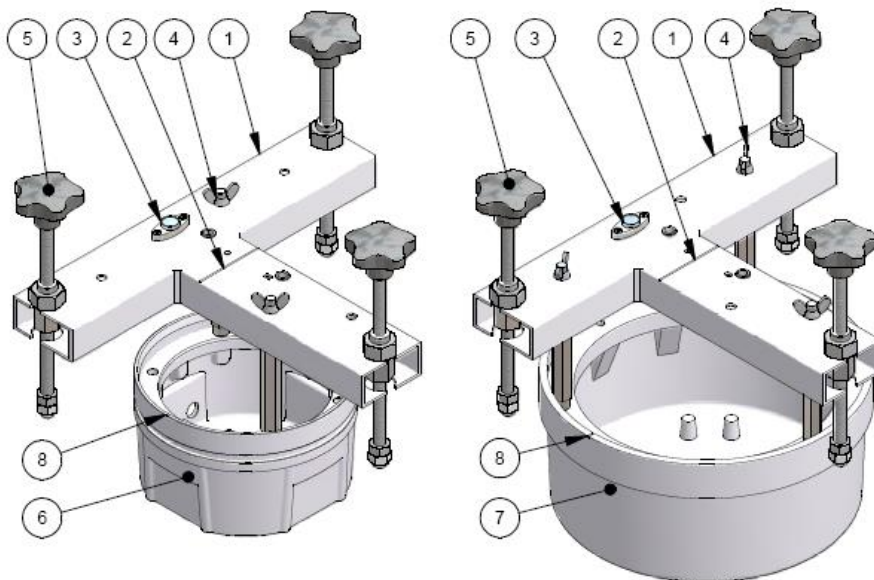


Figure 14 – 12" shallow base for side or bottom ducts (method "B")

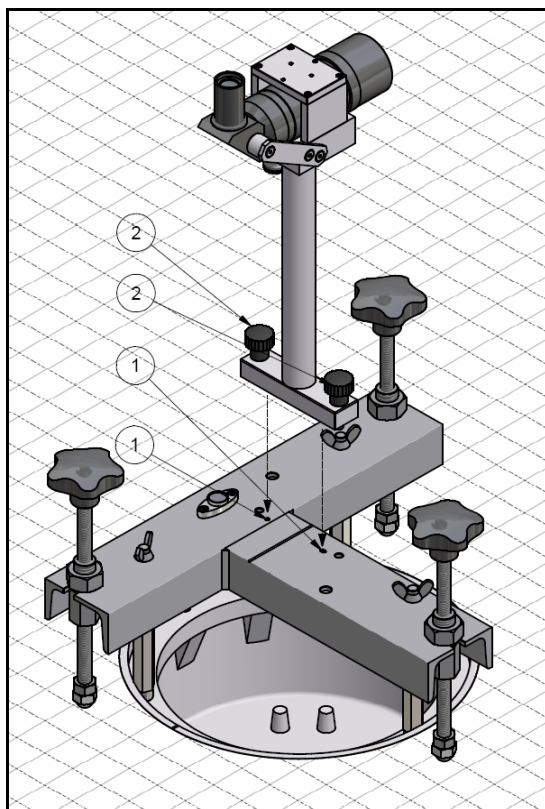


1. Positioning jig
2. Align the jig notch with the mark on the pavement
3. Circular level
4. Screws and spacers for the jig mounting
5. Lobe knob for positioning jig levelling
6. 8" shallow base
7. 12" shallow base
8. Shallow base notches aligned with the notch on the jig

Figure 15 – Shallow base installation details

Edition 11/03/2014

Supersedes edition 04/30/2012

**INSET RUNWAY EDGE LIGHT SLRE  
INSTRUCTION MANUAL FOR USE, INSTALLATION AND MAINTENANCE**

1. Positioning jig holes for optical device reference pins
2. Fixing knobs

*Figure 16 – Optical device (refer to the manual UT-MT-0485 for further information)*

### **3.3 INSTALLING THE LIGHT UNIT ON L-868 BASE, SIZE B**

Install L-868 light base in compliance with FAA AC 150/5340-30.

The fixture is shipped complete (including the lamps) and is ready for installation as received.

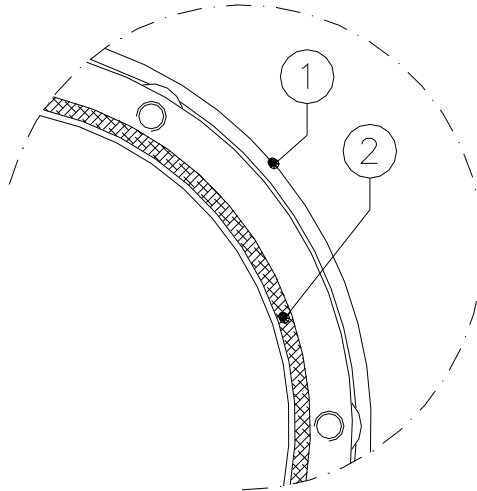
Be sure the flange on the transformer housing is clean and the O-Ring (Figure 17 – n°2), if used, is in place in the O-Ring groove.

Connect the plug of the fixture to the receptacle of the isolating transformer inside the deep base. Connect the grounding wire of the fixture to the grounding wire of the deep base (faston connection). Then press the fixture firmly and evenly by hand onto the base flange. Secure the fixture to the base by using the six locking screws complete with washers, supplied with the base. One drop of anaerobic adhesive, medium type (e.g. Loctite 243) should be applied to the screws before installation; tightening torque is 25 Nm.

The fixture is subject to optical misalignment and/or mechanical damage if not properly seated.

Edition 11/03/2014

Supersedes edition 04/30/2012

**INSET RUNWAY EDGE LIGHT SLRE  
INSTRUCTION MANUAL FOR USE, INSTALLATION AND MAINTENANCE**

1. L-868 base
2. O-Ring between  
fixture and base

*Figure 17 – Gaskets for L-868 base*

### **3.4 SECONDARY WIRING**

---

The IEC 61823 International Standard (AGL series transformers) states at para. 4.6 that “if an earthing connection is provided, it shall be connected to the larger socket of the transformer secondary connector.”

This means that, when a fixture is directly connected to the relevant isolation transformer (provided with earthing connection), the fixture secondary side is wired to the grounding network through the larger pin of fixture plug.

In case of an inset fixture, installed in the taxiway/runway pavement on its shallow base far from the relevant isolation transformer, it is necessary to provide a secondary extension between fixture and transformer. To help the installer to identify the larger socket of the female connector inside the base (when installed), the base secondary cable leads are identified by a colour code: the grey wire is wired to the larger socket, the black wire to the other one. In this way it will be easy to assure the earthing wiring, above described, between the larger socket of the transformer secondary connector and the larger pin of the fixture plug.



Edition 11/03/2014

Supersedes edition 04/30/2012

INSET RUNWAY EDGE LIGHT SLRE  
INSTRUCTION MANUAL FOR USE, INSTALLATION AND MAINTENANCE

## 4 MAINTENANCE

---

**WARNING**  
**BEFORE ANY MAINTENANCE INTERVENTION, MAKE SURE**  
**THE POWER SUPPLY BE SWITCHED OFF.**  
**DO NOT OPERATE ON LIVE PARTS!!!**

The preferred method of maintaining these lights is replacing each fixture periodically and systematically and return it to the maintenance shop for renovation.

Field servicing shall be limited to cleaning the prisms.

### 4.1 MAINTENANCE PROGRAM

---

In order to ensure maximum light fixture life, the installed units should be subject to a maintenance program in accordance with the following instructions and taking as reference the Airport Service Manual ICAO - Part 9 - Airport Maintenance Practices or FAA AC 150 5340-30.

#### 4.1.1 Periodical Checks

<b>Weekly</b>	Cleaning of the prisms and the light output channel of runway fixtures
<b>Bi-monthly</b>	Cleaning of the prisms and the light output channel of taxiway fixtures
<b>Annually</b>	Check for burned-out led
	Check for moisture inside the fixture
<b>Unscheduled</b>	<b>STABILITY OF THE CIVIL WORKS OF RUNWAY FIXTURES</b>
	Check for water in base
	<b>ELECTRICAL CONNECTIONS AND INSULATION DEGREE</b>
	<b>LEAKAGE TEST</b>
	Condition of all gaskets
	Check torque of mounting bolts after a month of their first installation
	Remove snow from around fixtures
	Check wires in saw kerfs

Edition 11/03/2014

Supersedes edition 04/30/2012

INSET RUNWAY EDGE LIGHT SLRE  
INSTRUCTION MANUAL FOR USE, INSTALLATION AND MAINTENANCE

#### 4.1.2 Snowplow Operations

Snowplow operators should exercise extra care not to strike the light fixtures with snowplow blades. After snow removal operations, inspect all light fixtures to locate and replace, if necessary, any damaged light assemblies.

Passes over the light rows should be made with a power broom only if practical. Whenever snowplows must traverse in-pavement light fixtures, they should be either travelling at less than 10 km/h or have the blades lifted clear of the fixtures. Recommended snow removal techniques are described in Airport Service Manual ICAO - Part 9 - Airport Maintenance Practices or FAA AC 150/5200-30.

## 4.2 REMOVING AND OPENING THE LIGHT UNIT FROM THE BASE

---

#### 4.2.1 Removing the fixture

- Remove the fixture from the base, after switching off, by unscrewing the six locking screws complete with washers.
- Raise the fixture by using the two lifting tools (P/N 332.4140 or 332.4230) inserted in the suitable slots provided on the dome. As an alternative, two screwdrivers can be used.
- Disconnect the fixture plug/s and grounding cable from those inside the shallow base.

#### 4.2.2 Opening the fixture

- Unscrew the leak valve cap and push the valve central pin, in this way the light internal pressure is the same of the atmospheric pressure.
- Open the fixture by unscrewing the three locking screws HSCH M5x16 (Figure 1 - n°22).

Every time the fixture is opened, inspect the following parts and replace them if necessary:

- prism, if it is dirty or damaged
- prism gasket, check the integrity
- cable lead with plug

#### 4.2.3 Closing the fixture

Every time the fixture is opened replace the following items with a new ones:

- three locking screws HSCH M5x16 (Figure 1 - n°22);
- O-Rings between dome and lower cover (Figure 1 – n°20).

Edition 11/03/2014

Supersedes edition 04/30/2012

INSET RUNWAY EDGE LIGHT SLRE  
INSTRUCTION MANUAL FOR USE, INSTALLATION AND MAINTENANCE

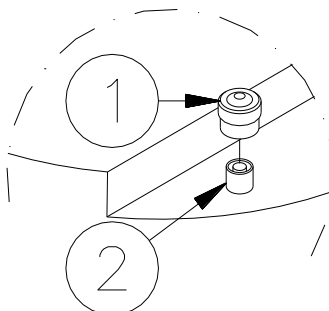
Verify the correct position of O-Ring between dome and lower cover (Figure 1 – n°20);, mount the lower cover on the dome and fasten it by means the three screws HSCH M5x16 (Figure 1 - n°22). One drop of anaerobic adhesive lower type (e.g. LOXEAL 24-18) should be applied to the screws before installation; tightening torque is 2.5 Nm.

#### 4.2.4 Leakage test

The assembly should be given a 1.38 kPa air pressure test. This can be done by connecting an external air pressure line to the valve (Figure 18 – n°2) provided on the lower cover. Immerge the assembly under water, so air loss will be easily viewed if some part is damaged or assembling is wrong.

If there is no air loss then test is passed successfully.

Light unit is ready to be field installed.



*Figure 18 - Lower Cover with Pressure Valve*

#### 4.2.5 Reinstalling the fixture

Every time the fixture is removed from the base **replace** the following items with a new making sure that are right placed in the relevant groove:

- the six special seal lock washers;
- O-Ring around the dome (Figure 13 – n°1);
- O-Ring between fixture and 12" shallow base (Figure 13 – n°3).

The fixture is ready to be field installed.

Edition 11/03/2014

Supersedes edition 04/30/2012

INSET RUNWAY EDGE LIGHT SLRE  
INSTRUCTION MANUAL FOR USE, INSTALLATION AND MAINTENANCE

### 4.3 PRIMS CLEANING

---

#### 4.3.1 Prism outside cleaning

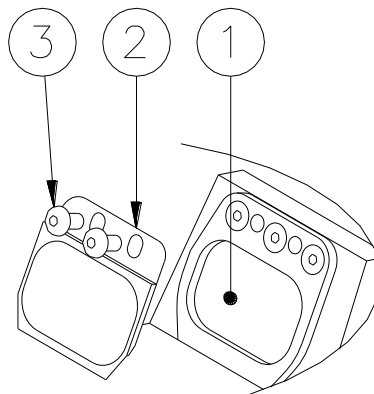
- Removing the fixture is not necessary to clean the outer surface of the prisms, and if already removed is not necessary to open it. Clean the prisms surface with non abrasive glass product.

#### 4.3.2 Prism inside cleaning

Normally the cleaning of the prism inside surfaces is not necessary because fixture is watertight. Whenever it is necessary, remember the following rules.

Remove the fixture from the base and open it following instructions of *“Removing and Opening the Light Unit From the Base”* and proceed as follows:

- remove the filter assembly (Figure 19 - n°2) unscrewing the relevant screws HSCH M5x10 (Figure 19 - n°3)
- clean the prisms surfaces (Figure - n°1) with non abrasive glass product
- dry them carefully
- reassembly the light unit following instructions of paragraph *“Closing the Fixture”*, *“Leakage Test”* and *“Reinstalling the fixture”*.



*Figure 19 - Prism Cleaning*

### 4.4 PRISM REPLACEMENT

---

If the prism is damaged it must be replaced as described below.

It is highly recommended to do a complete overhaul of the fixture. Contact OCEM - ENERGY TECHNOLOGY for any suggestion.

Edition 11/03/2014

Supersedes edition 04/30/2012

INSET RUNWAY EDGE LIGHT SLRE  
INSTRUCTION MANUAL FOR USE, INSTALLATION AND MAINTENANCE

#### 4.4.1 Removing the Prism

Remove the fixture from the base and open it following instructions of *“Removing and Opening the Light Unit From the Base”*.

Clean out possible pieces of the old prism and all accumulated debris from the inside. Remove the filter assembly (Figure 20 - n°7) unscrewing the relevant screws HSCH M5x10 (Figure 20 - n°8); unscrew the three screws HSFH M5x12 (Figure 20 - n°6) and remove the mounting plate (Figure 20 - n°5). Then remove the old prism and the gasket, carefully clean the prism seat by scraping and taking care not to damage the relevant walls.

#### 4.4.2 Installing the New Prism

Place a new gasket (Figure 20 - n°2) in the prism cavity on the dome, then position and press by hand the prism (Figure 20 - n°3) in the relevant seat and place a new prism nylon gasket in the back side of the prism (Figure 20 - n°4).

Then fasten the mounting plate (Figure 20 - n°5) with the three relevant screws HSFH M5x12 (Figure 20 - n°6); tightening torque is 2.5 Nm. Inspect all components inside the fixture for damages or signs of corrosion. Replace all necessary components.

Close the light fixture following instructions of paragraph *“Closing the Fixture”*, *“Leakage Test”* and *“Reinstalling the fixture”*.

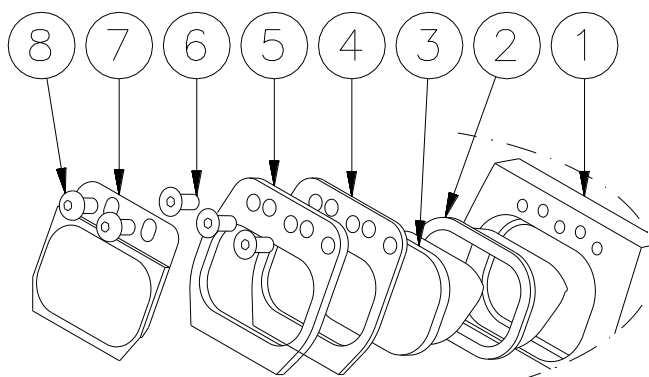


Figure 21 - Prism Replacement

### 4.5 FILTER REPLACEMENT

Remove the fixture from the base and open it following instructions of *“Removing and Opening the Light Unit From the Base”*.

It is highly recommended to do a complete overhaul of the fixture. Contact OCEM - ENERGY TECHNOLOGY for any suggestion.

Edition 11/03/2014

Supersedes edition 04/30/2012

INSET RUNWAY EDGE LIGHT SLRE  
INSTRUCTION MANUAL FOR USE, INSTALLATION AND MAINTENANCE

#### 4.5.1 Removing the filter

Clean out possible pieces of the old filter and all accumulated debris from the inside. Remove the filter assembly (Figure 21 - n°2) unscrewing the relevant screws HSCH M5x10 (Figure 21 - n°3).

#### 4.5.2 Installing the new filter

Place a new filter assembly (Figure 21 - n°2) and fix it to the dome using the relevant screws HSCH M5x10 (Figure 21 - n°3). Inspect all components inside the fixture for damages or signs of corrosion. Replace all necessary components.

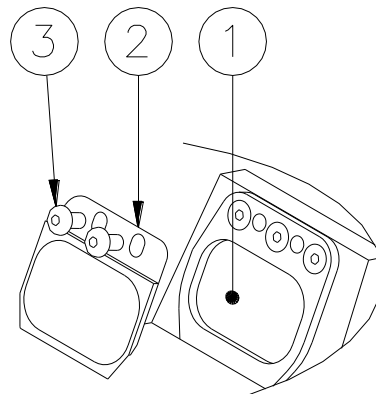


Figure 21 - Filter Replacement

Close the light fixture following instructions of paragraph “Closing the Fixture”, “Leakage Test” and “Reinstalling the fixture”.

## 4.6 RELAMPING

Remove the fixture from the base and open it following instructions of “Removing and Opening the Light Unit From the Base”.

Disconnect the male faston terminals of the lamp (Figure 22 - n°2) wires from the insulating strip (Figure 22 - n°1) and slide the lamp out from its lamp-holder seat (Figure 22 - n°3-4).

Connect the male faston terminals (Figure 22 - n°2) of the new lamp wires to the insulating strip (Figure 22 - n°1) and slide the lamp into its lamp-holder seat (Figure 22 - n°3-4).

**CAUTION:** touching the quartz bulb with bare fingers may seriously shorten the lamp life. If the quartz bulb has been touched, wipe it clean with a piece of fabric suitable for lens cleaning, or similar, moistened with isopropyl alcohol

Reassembly the fixture following instructions of paragraph “Closing the Fixture”, “Leakage Test” and “Reinstalling the fixture”.

Edition 11/03/2014

Supersedes edition 04/30/2012

INSET RUNWAY EDGE LIGHT SLRE  
INSTRUCTION MANUAL FOR USE, INSTALLATION AND MAINTENANCE

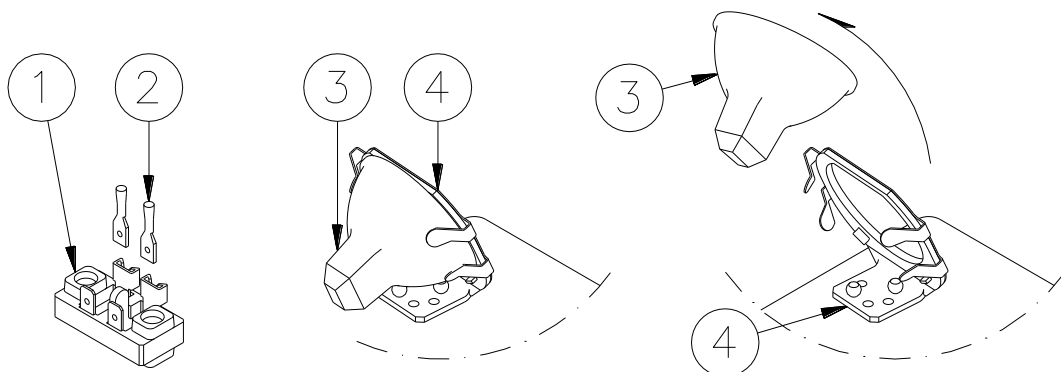


Figure 22 - Relamping

## 4.7 GASKETS

### 4.7.1 Gasket examination

Every time a fixture is opened each O-Ring must be examined as described below and replaced if necessary.

Any O-Ring that is stretched, torn, has a permanent set or some other defect, which would prevent it from obtaining a water-tight seal must be replaced with a new O-Ring.

Remove the fixture from the base and open it following instructions of *“Removing and Opening the Light Unit From the Base”*.

Light assembly is equipped with the following gaskets:

- O-Ring between dome and lower cover (Figure 1- n°20);
- O-Ring around the dome (Figure 13 - n°1);
- O-Ring between fixture and 12” shallow base (Figure 13 - n°3);
- prism gasket mounted between prism and dome (Figure 23 - n°2).

2.

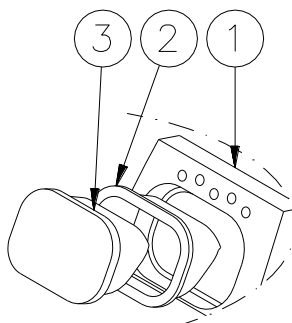


Figure 10 – Prism Gasket

Edition 11/03/2014

Supersedes edition 04/30/2012

INSET RUNWAY EDGE LIGHT SLRE  
INSTRUCTION MANUAL FOR USE, INSTALLATION AND MAINTENANCE

#### 4.7.2 O-Ring replacement

Remove the old O-Ring from the groove and clean the flange mating surfaces and the groove, scraping carefully. Take care not to damage the mating surface and the bottom and sides of the groove. Position it in the centre of its groove and push it inside.

**NOTE 1:** make sure that the proper O-Ring is re-inserted into the groove.

**NOTE 2:** the seat of an O-Ring gasket is dimensioned to allow the proper positioning when compressed between the mating surfaces. Screws properly tightened are important in obtaining a complete seal.

TIGHTENING TORQUE	
lower cover HSCH M5x16	2.5 Nm
fixture locking screw	35 Nm (for shallow base)
	25 Nm (for L-868 base, size B)

### 4.8 CABLE LEAD WITH PLUG

#### 4.8.1 Removing the cable lead with plug

Remove the fixture from the base and open it following instructions of *“Removing and Opening the Light Unit From the Base”*.

Inside the lower cover, disconnect the pair of wires with faston terminals from the insulating strip of the damaged cable lead (Figure 24 – n° 1-2). Remove the faston terminals by cutting the cables, unscrew the gland and pull out the cable lead with gland gasket.

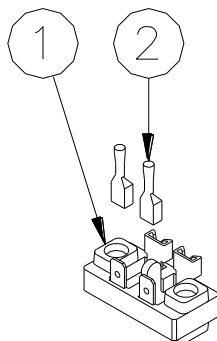


Figure 11 - Insulating Strip Female Faston



Edition 11/03/2014

Supersedes edition 04/30/2012

INSET RUNWAY EDGE LIGHT SLRE

INSTRUCTION MANUAL FOR USE, INSTALLATION AND MAINTENANCE

#### 4.8.2 Installing the new cable lead with plug

Insert on the new power supply cable lead with plug (Figure – n° 1) the new gland nut (Figure 25 – n° 2) with teflon washer (Figure 25 – n° 3), metal washer (Figure 25 – n° 4) and then the new gland gasket (Figure 25 – n° 5) so that the available length of cables outside the fixture is approx. 50 cm when re-assembled. Pull both cables through the suitable hole provided in the bottom of the lower cover; then splice each cable for a length of approx. 7 mm and clamp the female faston terminal to the cable (Figure 25 – n° 6).

Place the gland gasket inside its seat and tighten the gland nut. Restore internally the electrical connections.

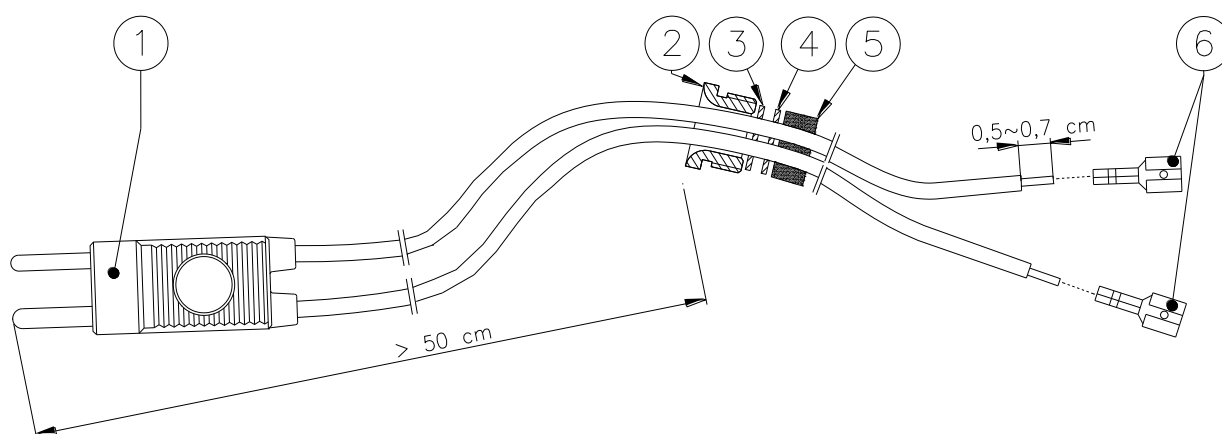


Figure 25 - Cable Lead With Plug

Close the light fixture following instructions of paragraph “Closing the Fixture”, “Leakage Test” and “Reinstalling the fixture”.

#### 4.9 VIBRATION-DAMPING BLOCK

Remove the fixture from the base and open it following instructions of “Removing and Opening the Light Unit From the Base”.

It is recommended to replace all the four vibration-damping blocks.

Remove the lamp supporting plate (Figure 26 - n°2) complete with lamps, by unscrewing the four screws HSCH M5x25 (Figure 26 - n°5).

Remove the brass spacers (Figure 26 - n°3) and then the vibration-damping blocks (Figure 26 - n°1).

Mount the new vibration-damping blocks in their seats and insert the new brass spacers. Reassembly the lamp supporting plate, by tightening the four screws HSCH M5x20 (Figure 26 - n°5); tightening torque is 2.5 Nm.

Edition 11/03/2014

Supersedes edition 04/30/2012

INSET RUNWAY EDGE LIGHT SLRE  
INSTRUCTION MANUAL FOR USE, INSTALLATION AND MAINTENANCE

Reassembly the light unit following instructions of paragraph *“Closing the Fixture”*, *“Leakage Test”* and *“Reinstalling the fixture”*.

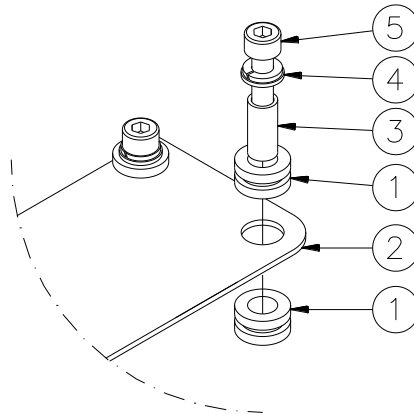


Figure 26 - Vibration-Damping Block

#### 4.10 PRESSURE VALVE

If a leakage is found through the pressure valve during an air pressure test, check carefully where the leakage happens. If the leakage is between the valve (Figure 27 - n°1) and the lower cover, check the tightening of the valve body to the lower cover from the inside of the fixture.

In case the pressure valve needs replacing, operate as follows, considering the fixture already opened following instructions of *“Removing and Opening the Light Unit From the Base”*. Remove the valve cap (Figure 277 - n°3). Unscrew the valve body with gasket from the inside of the lower cover (Figure 277 - n°2) by clamping the hexagonal end section of the valve body. Screw the new valve on the lower cover; tightening torque is 0.35 Nm. Check the valve core (Figure 277 - °4) is tightened to the valve body (Figure 27 - n°5) and then screw its cap (Figure 277- n°3).

Reassembly the light unit following instructions of paragraph *“Closing the Fixture”*, *“Leakage Test”* and *“Reinstalling the fixture”*.

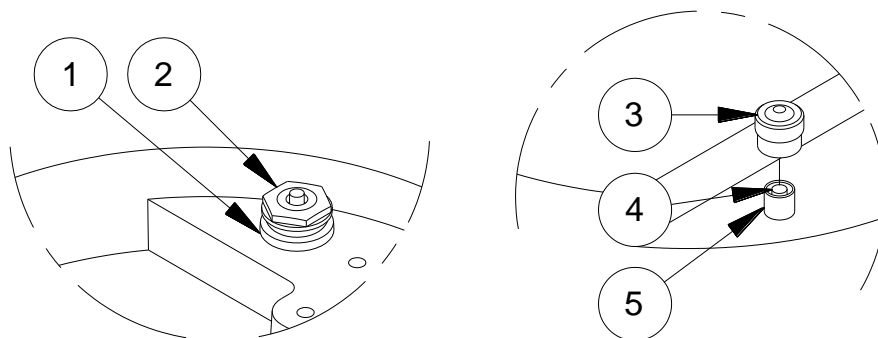


Figure 27 - Lower Cover with Pressure Valve

Edition 11/03/2014

Supersedes edition 04/30/2012

INSET RUNWAY EDGE LIGHT SLRE  
INSTRUCTION MANUAL FOR USE, INSTALLATION AND MAINTENANCE

#### **4.11 CLEANING**

---

Service life depends upon the entire assembly being waterproof. All surfaces must be clean, dry and free of all foreign matter if the light fixture is to operate for an extended period without requiring maintenance.